

LEGACY DESIGN SPECIFICATIONS

All changes to a Legacy property that can be seen from a common area or neighboring homes **MUST** be approved by the HOA Board.

COVERED PATIO

This document provides homeowners the minimum design specifications required to make a change to your property. Providing the HOA Board with clear documentation within the Design Review Request Form process, that meets the minimum requirements, will help to speed the approval process. Thank you!

Upon approval of a new **Covered Patio** by the HOA Board, you agree to all items below:

General:

A covered patio is a structure that is built and connected to the back of the home. Pavilions are not allowed.

Traditional Covered Patio Components MINIMUMS:

- Posts size 8" X 8"
- Main Beams size 4" X 8" (Beams)
- Joist beams size 4" X 6" (Support Beams)
- Purlins (top Layer) size 4" X 4" (Cross Members)
- Decorative angle beams 4" X 4" or larger (Knee Brace)
- Could use 3" instead of 4" wood in above examples if options 1-3 are also incorporated
- All materials, dimensions and colors must be submitted and approved.

Materials:

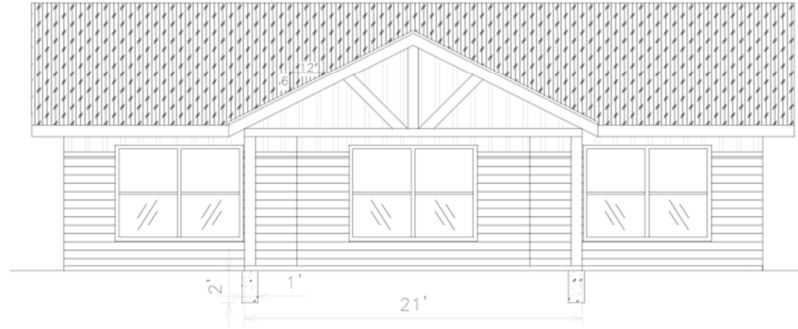
- Must meet all City of Eagle requirements and building codes.
- Roof - Shingles must match the home design guidelines (color, style, etc.)
- High profile ridge and hip shingles required - Gable or hipped roofline to match the home
- Shadow board on fascia to match home unless covered with gutters to match the home
- Gable ends siding material to match (size and material to match the home exact)
- Gable end vents are encouraged to match the home
- Siding size and style to match the home (i.e. lap, vertical, panel, stucco)
- All paint colors to match the home

Options:

1. Stone post bases, matching stone on home
2. Metal brackets as decoration (black or bronze color)
3. Decorative ends on beams, joists and purlins
4. Wrapped wood posts if smaller than 8" X 8"

Traditional Example:

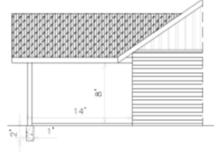
The schematic below is a representation of a typical submittal:



REAR ELEVATION

Materials

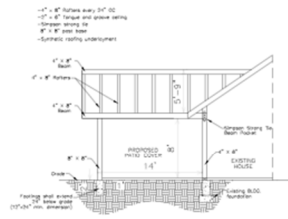
- Meet all City of Eagle requirements
- Roof is Black 30 year shingles to match the home
- High profile ridge and hip shingles required.
- Gable or hips to match the home
- Shadow board on fascia to match home unless covered with gutters to match the home
- Gable ends siding material to match (size and material to match the home exact)
- Gable end vents are encouraged to match the home (if applicable)
- Siding size and style to match the home (lap, vertical, panel, stucco)
- All paint colors to match the home
- All trim material must match the home in size, style and color



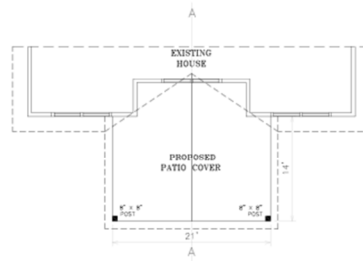
SIDE ELEVATION
FROM RIGHT SIDE



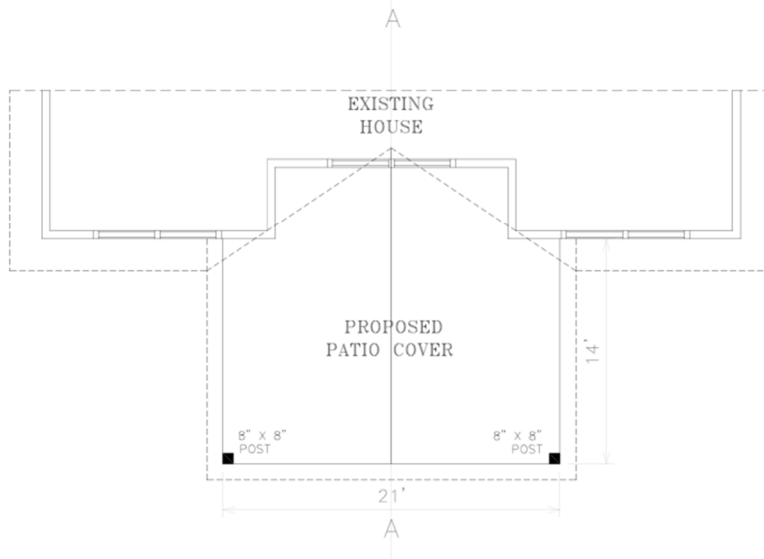
REAR ELEVATION



SECTION A-A
FROM RIGHT SIDE



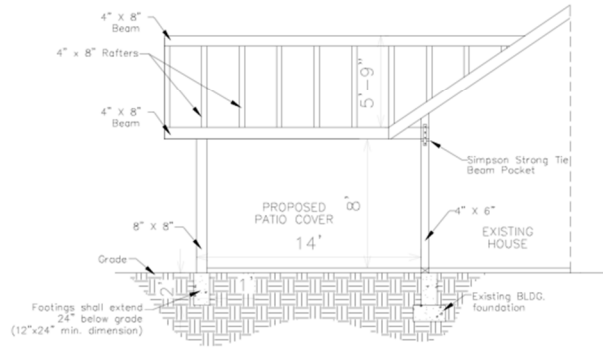
GROUND FLOOR PLAN



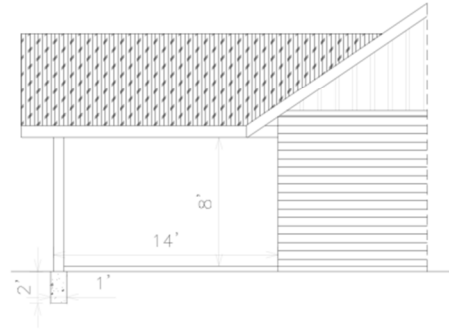
GROUND FLOOR PLAN



- 4" x 8" Rrafters every 24" OC
- 2" x 6" Tongue and groove ceiling
- Simpson strong tie
- 8" x 8" post base
- Synthetic roofing underlayment



SECTION A-A
FROM RIGHT SIDE



SIDE ELEVATION
FROM RIGHT SIDE